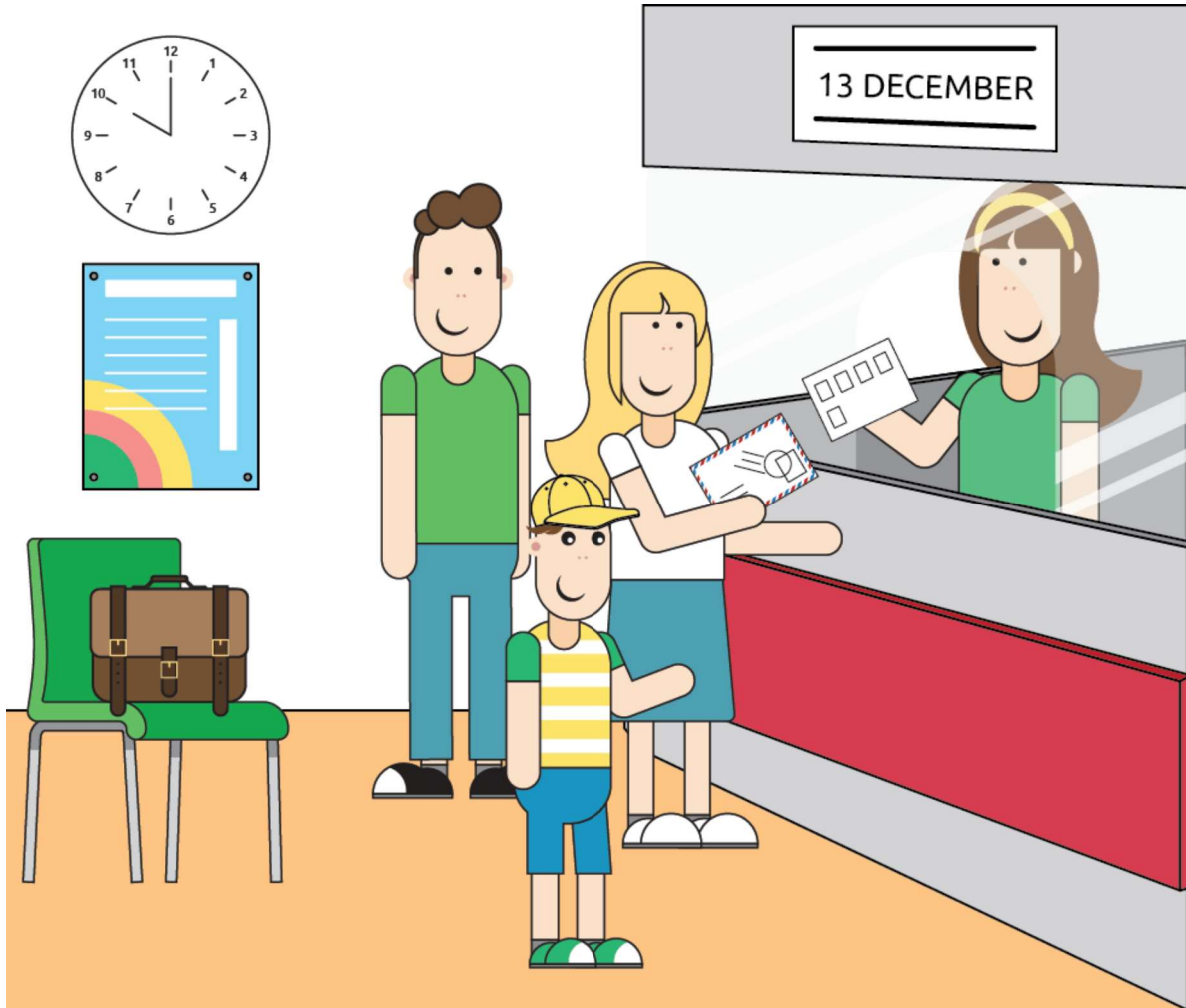


PART 3 (1 minute 30 seconds)

I: Now, Part Three. Here's a picture of a post office. *(Hand over candidate's copy of the task.)*
I also have a picture of a post office. Some things are different. You and I must find the differences.
All right? I start.

Interlocutor's Task Sheet



I: Thank you. *(Retrieve candidate's task sheet.)*

Candidate's Task Sheet (Interlocutor's copy)

